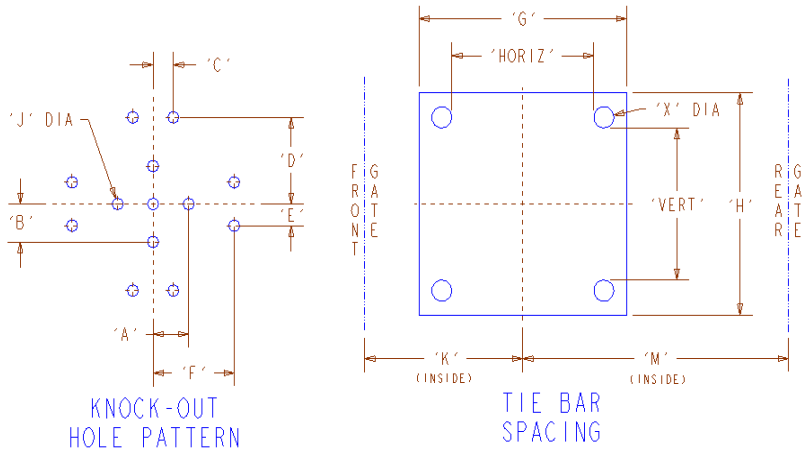


Press	Qty	Model Years of Presses	PRESS SIZE	SHOT SIZE	A	B	C	D	E	F	G	H	J Dia	K	M	X Dia	Tie Bar Spacing		Mold Height		Open Day-Light	Clamp Stroke	Eject. Stroke
																	Horiz	Vert	Min.	Max			
Van Dorn/Demag 50ET System	3	1996, 1997 & 2000	56 Ton English	3.5 oz	3.5 88.90	3.5 88.90	2.0 50.80	8.0 203.20	N/A N/A	N/A N/A	20.5 520.70	20.5 520.70	1.10 27.94	15.6 396.24	26.2 665.48	2.00 50.80	14.0 355.60	14.0 355.60	8.3 210.82	* *	24.0 609.60	15.7 398.78	4.9 124.46
Toshiba EC 65 All-Electric	2	2000 & 2002	65 Ton English	2.2 oz	3.5 88.90	3.5 88.90	N/A N/A	N/A N/A	N/A N/A	N/A N/A	21.3 541.02	21.3 541.02	1.10 27.94	17.45 443.23	19.35 491.49	2.20 55.88	13.8 350.52	13.8 350.52	8.1 205.74	* *	26.0 660.40	11.4 289.56	2.8 71.12
Toshiba EC 65 All-Electric	2	2000 & 2002	65 Ton English	2.9 oz	3.5 88.90	3.5 88.90	N/A N/A	N/A N/A	N/A N/A	N/A N/A	21.3 541.02	21.3 541.02	1.10 27.94	17.45 443.23	19.35 491.49	2.20 55.88	13.8 350.52	13.8 350.52	8.1 205.74	* *	26.0 660.40	11.4 289.56	2.8 71.12
Demag Ergotech 60/420 -80 System	1	2000	66 Ton English	.71 oz	3.5 88.90	3.5 88.90	2.0 50.80	8.0 203.20	N/A N/A	N/A N/A	23.2 589.28	23.2 589.28	1.06 26.92	16.5 419.10	27.4 695.96	2.36 59.94	16.5 419.10	16.5 419.10	9.8 248.92	* *	26.7 678.18	17.7 449.58	5.9 149.86
Van Dorn/Demag 100ET System	1	1995	112 Ton English	5.6 oz	3.5 88.90	3.5 88.90	2.0 50.80	8.0 203.20	N/A N/A	N/A N/A	22.8 579.12	22.8 579.12	1.10 27.94	16.7 424.18	27.4 695.96	2.40 60.96	15.7 398.78	15.7 398.78	9.8 248.92	* *	29.5 749.30	19.7 500.38	5.9 149.86
Van Dorn/Demag 110ET System	3	1996, 1997 & 2000	124 Ton English	7.7 oz	3.5 88.90	3.5 88.90	2.0 50.80	8.0 203.20	N/A N/A	N/A N/A	26.4 670.56	26.4 670.56	1.10 27.94	19.3 490.22	29.1 739.14	2.80 71.12	17.7 449.58	17.7 449.58	9.8 248.92	* *	33.5 850.90	23.6 599.44	7.1 180.34
Toshiba EC 180-N Electric	1	2005	176 Ton English	8.3 oz	3.5 88.90	3.5 88.90	2.0 50.80	8.0 203.20	2.0 50.80	8.0 203.20	31.1 789.94	29.1 739.14	1.06 26.92	21.9 556.26	24.5 622.30	3.55 90.17	22.0 558.80	20.1 510.54	7.9 200.66	19.7 500.38	37.7 957.58	17.7 449.58	4.7 119.89
Toshiba EC 180 Electric	1	2002	176 Ton English	9.5 oz	3.5 88.90	3.5 88.90	2.0 50.80	8.0 203.20	2.0 50.80	8.0 203.20	29.1 739.14	29.1 739.14	1.06 26.92	19.7 500.38	24.5 622.30	3.55 90.17	20.0 508.00	20.0 508.00	7.9 200.66	19.7 500.38	37.7 957.58	17.7 449.58	5.0 127.00
Toshiba EC 180 Electric	2	2002 & 2005	176 Ton English	11.5 oz	3.5 88.90	3.5 88.90	2.0 50.80	8.0 203.20	2.0 50.80	8.0 203.20	29.1 739.14	29.1 739.14	1.06 26.92	19.7 500.38	24.5 622.30	3.55 90.17	20.0 508.00	20.0 508.00	7.9 200.66	19.7 500.38	37.7 957.58	17.7 449.58	5.0 127.00
Van Dorn 230-HT	1	1996	230 Ton English	14.0 oz	3.5 88.90	3.5 88.90	2.0 50.80	8.0 203.20	2.0 50.80	8.0 203.20	32.2 817.88	32.3 820.42	1.06 26.92	20.2 513.08	29.1 739.14	3.70 93.98	22.0 558.80	22.0 558.80	7.0 177.80	22.0 558.80	42.0 1066.80	20.0 508.00	4.5 114.30
Van Dorn 300-HT	1	2007	300 Ton English	24.5 oz	3.5 88.90	3.5 88.90	2.0 50.80	8.0 203.20	2.0 50.80	8.0 203.20	36.9 937.26	36.8 934.72	1.06 26.92	22.5 571.50	31.5 800.10	4.25 107.95	25.0 635.00	25.0 635.00	8.0 203.20	25.0 635.00	49.0 1244.60	24.0 609.60	6.0 152.40
Demag 400-HT	1	2006	400 Ton English	17.6 oz.	3.5 88.90	3.5 88.90	2.0 50.80	8.0 203.20	2.0 50.80	8.0 203.20	42.0 1066.80	42.0 1066.80	1.06 26.92	24.6 624.84	34.7 881.38	5.00 127.00	28.0 711.20	28.0 711.20	8.0 203.20	26.0 660.40	54.0 1371.60	26.0 660.40	6.0 152.40



**Blue Numbers = mm**  
 \* Mold Height + Total Mold Opening Req'd. can not exceed Maximum Daylight!

